

 **Sharkoon**



**SKILLER**  
**SFM11**  
**GAMING FLOOR MAT**

# FOUR RESILIENT DESIGNS

The SKILLER SFM11 is available in four unique designs - from the adventurous to the futuristic. What the four patterns have in common, however, is a high degree of quality, giving wear and tear just about no chance at all. Using the sublimation process, all prints are impregnated directly into the fabric, meaning that they last much longer compared to other usual prints.

## HEX



The hex design is particularly impressive with its hyper-realistic 3D depth-effect in dark colors. This dusky and atmospheric motif is a timeless eye-catcher.

## CUBE



This cubic design depicts the name Sharkoon in three matte colors, which together form a single cube. The simplicity of the design will allow the mat to be easily integrated into almost any room.

## RETRO



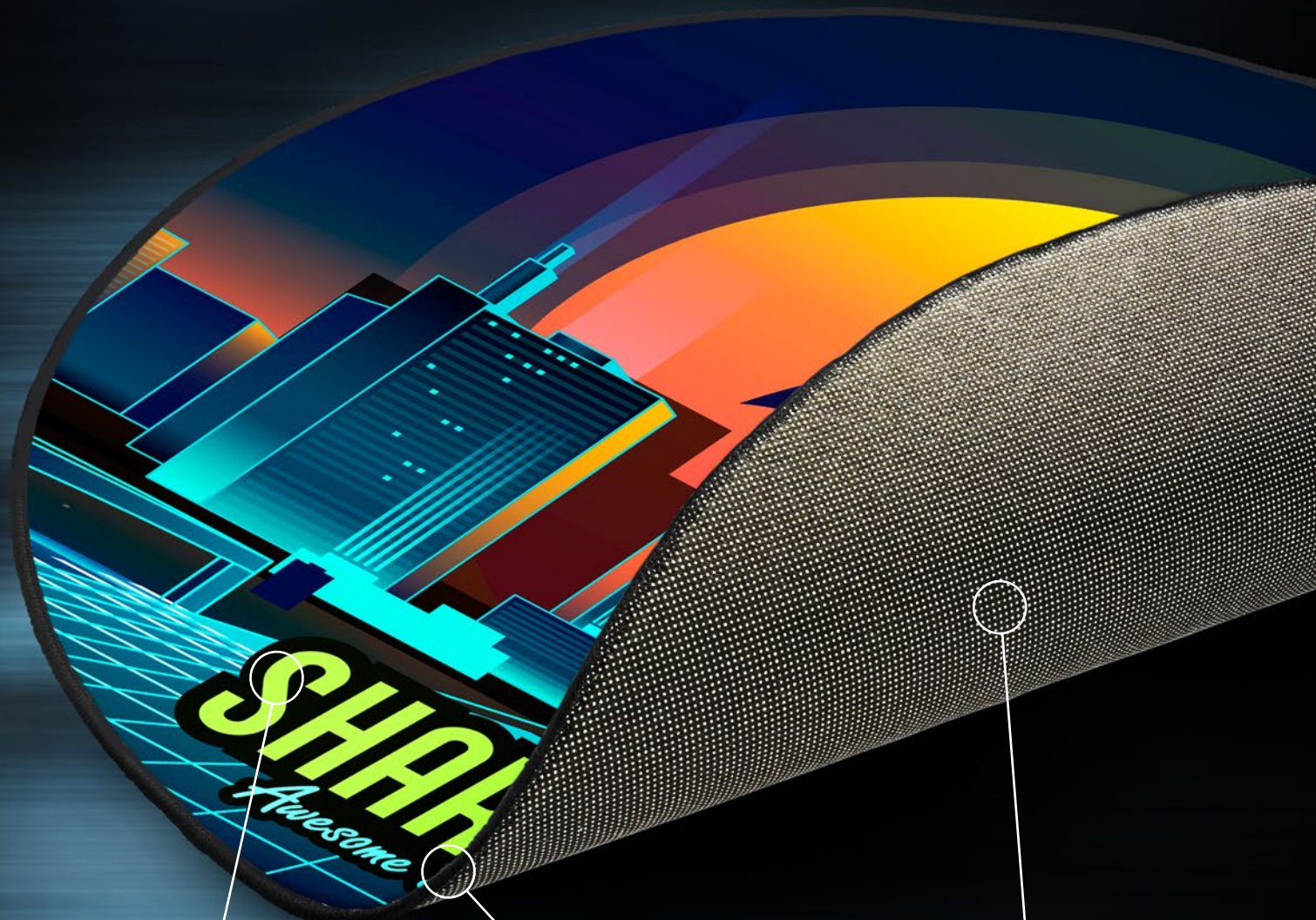
The retro-urban design looks futuristic and depicts a cyber-like skyline with the Sharkoon logo on the horizon in front of the glowing red sun. Fans of such impressive scenes will undoubtedly appreciate this floor protection mat.

## GAMING AREA

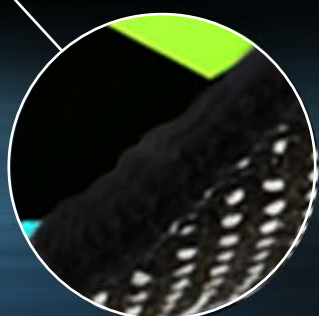


The gaming area design is presented in light, slightly faded colors that are reminiscent of the surfing style of the early 1960s. Its appearance is refreshing and playful and can add a splash of color within your own four walls.

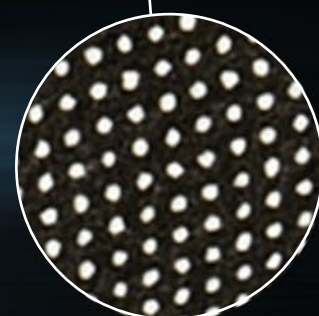
# TOP FEATURES



**Robust and extremely durable surface material**



**Highly durable stitching preventing fraying**



**Rubber base for a perfect grip**

## HARD-WEARING AND NOISE DAMPENING

Thanks to the five-millimeter thickness of the floor protection mat, it can endure the continuous rolling of chair casters, while, at the same time, noises are effectively muffled. Thanks to the durable SFM11, the floor will be protected from scratches as well as abrasion marks caused by the chair casters. The stitched edging prevents the mat from fraying and adds to the durability and long life of the mat. With its rubberized underside, the mat won't let itself get pushed and will always stay firmly in place.

# SPECIFICATIONS



## SKILLER SFM11

### General:

■ Available Versions:	Gaming Area, Hex, Retro, Cube
■ Diameter:	120 cm
■ Material Thickness:	5 mm
■ Surface:	Polyester
■ Non-slip Base:	✓

### Package Contents:

- SKILLER SFM11



[sharkoon.com](http://sharkoon.com)