

Shenzhen Most Technology Service Co., Limited

No.5, Nangshan 2th Rd., North Hi-Tech Industrial park, Nanshan Shenzhen Guangdong, China

Tel:(86) 755-86026850

Http:// www.szmost.com

Report No.: MTHN19110180

Fax:(86) 755-26013350

Email: szmost@szmost.com

Customer : Sharkoon Technologies GmbH

Address : Grüninger Weg 48 35415 Pohlheim | Germany

Report on the submitted sample said to be

Sample name : Hi-Res Type C Audio Adapter with PD

Model name : Sharkoon Mobile DAC PD

Item/Lot No. : --

Material : --

Trademark : Sharkoon

Buyer : --

Supplier : --

Manufacturer : Sharkoon Technologies GmbH

Address : Grüninger Weg 48 35415 Pohlheim | Germany

Date of receipt of test item: 2019-11-5

Date (s) of performance of tests: 2019-11-06 to 2019-11-13

RESULTS: (PASS) Please refer to next page.

Summary of Test Results:

TEST REQUEST

A EU RoHS Directive 2011/65/EU & (EU) 2015/863 and its amendment directives(RoHS 2.0)

CONCLUSION

Pass

*****FOR FURTHER DETAILS, PLEASE REFER TO THE FOLLOWING PAGE (S) *****

Signed for Most Technology Service Co., Limited

Written by:

QAH

Inspected by:

Jack Olney

Approved by:

Y. Jetterson



Shenzhen Most Technology Service Co., Limited

No.5, Nangshan 2th Rd., North Hi-Tech Industrial park, Nanshan Shenzhen Guangdong, China

Tel:(86) 755-86026850

Http:// www.szmost.com

Report No.: MTHN19110180

Fax:(86) 755-26013350

Email: szmost@szmost.com

Consolidation of Test Data

No.	Test Sample		Test Data(ppm)	Limits	Remark:
	(BOM) Part No.	Location			
1	SE-CONH-CM-SM-01	CON2	Cd: N.D. Pb: N.D. Hg: N.D. Cr ⁶⁺ : N.D. PBBs: N.D. PBDEs: N.D. DBP: ND BBP: ND DEHP:ND DIBP: ND	Cd: 0.01%(100mg/kg) Pb: 0.1%(1000mg/kg) Hg: 0.1%(1000mg/kg) Cr ⁶⁺ : 0.1%(1000mg/kg) PBBs: 0.1%(1000mg/kg) PBDEs: 0.1%(1000mg/kg) DBP: 0.1%(1000mg/kg) BBP: 0.1%(1000mg/kg) DEHP: 0.1%(1000mg/kg) DIBP: 0.1%(1000mg/kg)	--
2	SE-JCKS-3N-7P-BLK	J2	Cd: N.D. Pb: N.D. Hg: N.D. Cr ⁶⁺ : N.D. PBBs: N.D. PBDEs: N.D. DBP: ND BBP: ND DEHP:ND DIBP: ND	Cd: 0.01%(100mg/kg) Pb: 0.1%(1000mg/kg) Hg: 0.1%(1000mg/kg) Cr ⁶⁺ : 0.1%(1000mg/kg) PBBs: 0.1%(1000mg/kg) PBDEs: 0.1%(1000mg/kg) DBP: 0.1%(1000mg/kg) BBP: 0.1%(1000mg/kg) DEHP: 0.1%(1000mg/kg) DIBP: 0.1%(1000mg/kg)	--
3	SE-COND-C-F-01	CON1	Cd: N.D. Pb: N.D. Hg: N.D. Cr ⁶⁺ : N.D. PBBs: N.D. PBDEs: N.D. DBP: ND BBP: ND DEHP:ND DIBP: ND	Cd: 0.01%(100mg/kg) Pb: 0.1%(1000mg/kg) Hg: 0.1%(1000mg/kg) Cr ⁶⁺ : 0.1%(1000mg/kg) PBBs: 0.1%(1000mg/kg) PBDEs: 0.1%(1000mg/kg) DBP: 0.1%(1000mg/kg) BBP: 0.1%(1000mg/kg) DEHP: 0.1%(1000mg/kg) DIBP: 0.1%(1000mg/kg)	--
4	SE-HDRP-D127-V15-01	J1	Cd: N.D. Pb: N.D. Hg: N.D. Cr ⁶⁺ : N.D. PBBs: N.D. PBDEs: N.D. DBP: ND	Cd: 0.01%(100mg/kg) Pb: 0.1%(1000mg/kg) Hg: 0.1%(1000mg/kg) Cr ⁶⁺ : 0.1%(1000mg/kg) PBBs: 0.1%(1000mg/kg) PBDEs: 0.1%(1000mg/kg) DBP: 0.1%(1000mg/kg)	--

Shenzhen Most Technology Service Co., Limited

No.5, Nangshan 2th Rd., North Hi-Tech Industrial park, Nanshan Shenzhen Guangdong, China

Tel:(86) 755-86026850

Http:// www.szmost.com

Report No.: MTHN19110180

Fax:(86) 755-26013350

Email: szmost@szmost.com

			BBP: ND DEHP:ND DIBP: ND	BBP: 0.1%(1000mg/kg) DEHP: 0.1%(1000mg/kg) DIBP: 0.1%(1000mg/kg)	
5	SE-SWTS-TCT-3520-01	SW1	Cd: N.D. Pb: N.D. Hg: N.D. Cr ⁶⁺ : N.D. PBBs: N.D. PBDEs: N.D. DBP: ND BBP: ND DEHP:ND DIBP: ND	Cd: 0.01%(100mg/kg) Pb: 0.1%(1000mg/kg) Hg: 0.1%(1000mg/kg) Cr ⁶⁺ : 0.1%(1000mg/kg) PBBs: 0.1%(1000mg/kg) PBDEs: 0.1%(1000mg/kg) DBP: 0.1%(1000mg/kg) BBP: 0.1%(1000mg/kg) DEHP: 0.1%(1000mg/kg) DIBP: 0.1%(1000mg/kg)	--
6	SE-CAPC-0402-Z-104	C4, C10, C30	Cd: N.D. Pb: N.D. Hg: N.D. Cr ⁶⁺ : N.D. PBBs: N.D. PBDEs: N.D. DBP: ND BBP: ND DEHP:ND DIBP: ND	Cd: 0.01%(100mg/kg) Pb: 0.1%(1000mg/kg) Hg: 0.1%(1000mg/kg) Cr ⁶⁺ : 0.1%(1000mg/kg) PBBs: 0.1%(1000mg/kg) PBDEs: 0.1%(1000mg/kg) DBP: 0.1%(1000mg/kg) BBP: 0.1%(1000mg/kg) DEHP: 0.1%(1000mg/kg) DIBP: 0.1%(1000mg/kg)	--
7	SE-CAPC-0402-Z-105	C5,C8, C13,C14, C15,C17, C25,C26, C27,C29	Cd: N.D. Pb: N.D. Hg: N.D. Cr ⁶⁺ : N.D. PBBs: N.D. PBDEs: N.D. DBP: ND BBP: ND DEHP:ND DIBP: ND	Cd: 0.01%(100mg/kg) Pb: 0.1%(1000mg/kg) Hg: 0.1%(1000mg/kg) Cr ⁶⁺ : 0.1%(1000mg/kg) PBBs: 0.1%(1000mg/kg) PBDEs: 0.1%(1000mg/kg) DBP: 0.1%(1000mg/kg) BBP: 0.1%(1000mg/kg) DEHP: 0.1%(1000mg/kg) DIBP: 0.1%(1000mg/kg)	--
8	SE-CAPC-0805-Z-106A	C6	Cd: N.D. Pb: N.D. Hg: N.D. Cr ⁶⁺ : N.D. PBBs: N.D. PBDEs: N.D. DBP: ND BBP: ND DEHP:ND DIBP: ND	Cd: 0.01%(100mg/kg) Pb: 0.1%(1000mg/kg) Hg: 0.1%(1000mg/kg) Cr ⁶⁺ : 0.1%(1000mg/kg) PBBs: 0.1%(1000mg/kg) PBDEs: 0.1%(1000mg/kg) DBP: 0.1%(1000mg/kg) BBP: 0.1%(1000mg/kg) DEHP: 0.1%(1000mg/kg) DIBP: 0.1%(1000mg/kg)	--

Shenzhen Most Technology Service Co., Limited

No.5, Nangshan 2th Rd., North Hi-Tech Industrial park, Nanshan Shenzhen Guangdong, China

Tel:(86) 755-86026850

Http:// www.szmost.com

Report No.: MTHN19110180

Fax:(86) 755-26013350

Email: szmost@szmost.com

9	SE-CAPC-0402-M-106	C7, C11	Cd: N.D. Pb: N.D. Hg: N.D. Cr ⁶⁺ : N.D. PBBs: N.D. PBDEs: N.D. DBP: ND BBP: ND DEHP:ND DIBP: ND	Cd: 0.01%(100mg/kg) Pb: 0.1%(1000mg/kg) Hg: 0.1%(1000mg/kg) Cr ⁶⁺ : 0.1%(1000mg/kg) PBBs: 0.1%(1000mg/kg) PBDEs: 0.1%(1000mg/kg) DBP: 0.1%(1000mg/kg) BBP: 0.1%(1000mg/kg) DEHP: 0.1%(1000mg/kg) DIBP: 0.1%(1000mg/kg)	--
10	SE-CAPC-0402-J-68X	C20, C24	Cd: N.D. Pb: N.D. Hg: N.D. Cr ⁶⁺ : N.D. PBBs: N.D. PBDEs: N.D. DBP: ND BBP: ND DEHP:ND DIBP: ND	Cd: 0.01%(100mg/kg) Pb: 0.1%(1000mg/kg) Hg: 0.1%(1000mg/kg) Cr ⁶⁺ : 0.1%(1000mg/kg) PBBs: 0.1%(1000mg/kg) PBDEs: 0.1%(1000mg/kg) DBP: 0.1%(1000mg/kg) BBP: 0.1%(1000mg/kg) DEHP: 0.1%(1000mg/kg) DIBP: 0.1%(1000mg/kg)	--
11	SE-CAPC-0402-K-225	C28	Cd: N.D. Pb: N.D. Hg: N.D. Cr ⁶⁺ : N.D. PBBs: N.D. PBDEs: N.D. DBP: ND BBP: ND DEHP:ND DIBP: ND	Cd: 0.01%(100mg/kg) Pb: 0.1%(1000mg/kg) Hg: 0.1%(1000mg/kg) Cr ⁶⁺ : 0.1%(1000mg/kg) PBBs: 0.1%(1000mg/kg) PBDEs: 0.1%(1000mg/kg) DBP: 0.1%(1000mg/kg) BBP: 0.1%(1000mg/kg) DEHP: 0.1%(1000mg/kg) DIBP: 0.1%(1000mg/kg)	--
12	SE-RES5-0402-0000	R2, R3	Cd: N.D. Pb: N.D. Hg: N.D. Cr ⁶⁺ : N.D. PBBs: N.D. PBDEs: N.D. DBP: ND BBP: ND DEHP:ND DIBP: ND	Cd: 0.01%(100mg/kg) Pb: 0.1%(1000mg/kg) Hg: 0.1%(1000mg/kg) Cr ⁶⁺ : 0.1%(1000mg/kg) PBBs: 0.1%(1000mg/kg) PBDEs: 0.1%(1000mg/kg) DBP: 0.1%(1000mg/kg) BBP: 0.1%(1000mg/kg) DEHP: 0.1%(1000mg/kg) DIBP: 0.1%(1000mg/kg)	--
13	SE-RES5-0402-2230	R4	Cd: N.D. Pb: N.D. Hg: N.D.	Cd: 0.01%(100mg/kg) Pb: 0.1%(1000mg/kg) Hg: 0.1%(1000mg/kg)	--

Shenzhen Most Technology Service Co., Limited

No.5, Nangshan 2th Rd., North Hi-Tech Industrial park, Nanshan Shenzhen Guangdong, China

Tel:(86) 755-86026850

Http:// www.szmost.com

Report No.: MTHN19110180

Fax:(86) 755-26013350

Email: szmost@szmost.com

			Cr ⁶⁺ : N.D. PBBs: N.D. PBDEs: N.D. DBP: ND BBP: ND DEHP:ND DIBP: ND	Cr ⁶⁺ : 0.1%(1000mg/kg) PBBs: 0.1%(1000mg/kg) PBDEs: 0.1%(1000mg/kg) DBP: 0.1%(1000mg/kg) BBP: 0.1%(1000mg/kg) DEHP: 0.1%(1000mg/kg) DIBP: 0.1%(1000mg/kg)	
14	SE-RES5-0402-2020	R12	Cd: N.D. Pb: N.D. Hg: N.D. Cr ⁶⁺ : N.D. PBBs: N.D. PBDEs: N.D. DBP: ND BBP: ND DEHP:ND DIBP: ND	Cd: 0.01%(100mg/kg) Pb: 0.1%(1000mg/kg) Hg: 0.1%(1000mg/kg) Cr ⁶⁺ : 0.1%(1000mg/kg) PBBs: 0.1%(1000mg/kg) PBDEs: 0.1%(1000mg/kg) DBP: 0.1%(1000mg/kg) BBP: 0.1%(1000mg/kg) DEHP: 0.1%(1000mg/kg) DIBP: 0.1%(1000mg/kg)	--
15	SE-RES5-0402-3340	R14	Cd: N.D. Pb: N.D. Hg: N.D. Cr ⁶⁺ : N.D. PBBs: N.D. PBDEs: N.D. DBP: ND BBP: ND DEHP:ND DIBP: ND	Cd: 0.01%(100mg/kg) Pb: 0.1%(1000mg/kg) Hg: 0.1%(1000mg/kg) Cr ⁶⁺ : 0.1%(1000mg/kg) PBBs: 0.1%(1000mg/kg) PBDEs: 0.1%(1000mg/kg) DBP: 0.1%(1000mg/kg) BBP: 0.1%(1000mg/kg) DEHP: 0.1%(1000mg/kg) DIBP: 0.1%(1000mg/kg)	--
16	SE-RES5-0402-1020	R17, R19, R20	Cd: N.D. Pb: N.D. Hg: N.D. Cr ⁶⁺ : N.D. PBBs: N.D. PBDEs: N.D. DBP: ND BBP: ND DEHP:ND DIBP: ND	Cd: 0.01%(100mg/kg) Pb: 0.1%(1000mg/kg) Hg: 0.1%(1000mg/kg) Cr ⁶⁺ : 0.1%(1000mg/kg) PBBs: 0.1%(1000mg/kg) PBDEs: 0.1%(1000mg/kg) DBP: 0.1%(1000mg/kg) BBP: 0.1%(1000mg/kg) DEHP: 0.1%(1000mg/kg) DIBP: 0.1%(1000mg/kg)	--
17	SE-RES1-0402-1030	R11, R22, R26, R37, R38	Cd: N.D. Pb: N.D. Hg: N.D. Cr ⁶⁺ : N.D. PBBs: N.D. PBDEs: N.D.	Cd: 0.01%(100mg/kg) Pb: 0.1%(1000mg/kg) Hg: 0.1%(1000mg/kg) Cr ⁶⁺ : 0.1%(1000mg/kg) PBBs: 0.1%(1000mg/kg) PBDEs: 0.1%(1000mg/kg)	--

Shenzhen Most Technology Service Co., Limited

No.5, Nangshan 2th Rd., North Hi-Tech Industrial park, Nanshan Shenzhen Guangdong, China

Tel:(86) 755-86026850

Http:// www.szmost.com

Report No.: MTHN19110180

Fax:(86) 755-26013350

Email: szmost@szmost.com

			DBP: ND BBP: ND DEHP:ND DIBP: ND	DBP: 0.1%(1000mg/kg) BBP: 0.1%(1000mg/kg) DEHP: 0.1%(1000mg/kg) DIBP: 0.1%(1000mg/kg)	
18	SE-RES5-0402-3320	R21, R27, R36, R39	Cd: N.D. Pb: N.D. Hg: N.D. Cr ⁶⁺ : N.D. PBBs: N.D. PBDEs: N.D. DBP: ND BBP: ND DEHP:ND DIBP: ND	Cd: 0.01%(100mg/kg) Pb: 0.1%(1000mg/kg) Hg: 0.1%(1000mg/kg) Cr ⁶⁺ : 0.1%(1000mg/kg) PBBs: 0.1%(1000mg/kg) PBDEs: 0.1%(1000mg/kg) DBP: 0.1%(1000mg/kg) BBP: 0.1%(1000mg/kg) DEHP: 0.1%(1000mg/kg) DIBP: 0.1%(1000mg/kg)	--
19	SE-RES5-0402-5120	R24, R25, R33, R35	Cd: N.D. Pb: N.D. Hg: N.D. Cr ⁶⁺ : N.D. PBBs: N.D. PBDEs: N.D. DBP: ND BBP: ND DEHP:ND DIBP: ND	Cd: 0.01%(100mg/kg) Pb: 0.1%(1000mg/kg) Hg: 0.1%(1000mg/kg) Cr ⁶⁺ : 0.1%(1000mg/kg) PBBs: 0.1%(1000mg/kg) PBDEs: 0.1%(1000mg/kg) DBP: 0.1%(1000mg/kg) BBP: 0.1%(1000mg/kg) DEHP: 0.1%(1000mg/kg) DIBP: 0.1%(1000mg/kg)	--
20	SE-RES5-0402-0202	R30, R31, R34	Cd: N.D. Pb: N.D. Hg: N.D. Cr ⁶⁺ : N.D. PBBs: N.D. PBDEs: N.D. DBP: ND BBP: ND DEHP:ND DIBP: ND	Cd: 0.01%(100mg/kg) Pb: 0.1%(1000mg/kg) Hg: 0.1%(1000mg/kg) Cr ⁶⁺ : 0.1%(1000mg/kg) PBBs: 0.1%(1000mg/kg) PBDEs: 0.1%(1000mg/kg) DBP: 0.1%(1000mg/kg) BBP: 0.1%(1000mg/kg) DEHP: 0.1%(1000mg/kg) DIBP: 0.1%(1000mg/kg)	--
21	SE-CAPC-0402-Z-104	C1, C4, C8	Cd: N.D. Pb: N.D. Hg: N.D. Cr ⁶⁺ : N.D. PBBs: N.D. PBDEs: N.D. DBP: ND BBP: ND DEHP:ND	Cd: 0.01%(100mg/kg) Pb: 0.1%(1000mg/kg) Hg: 0.1%(1000mg/kg) Cr ⁶⁺ : 0.1%(1000mg/kg) PBBs: 0.1%(1000mg/kg) PBDEs: 0.1%(1000mg/kg) DBP: 0.1%(1000mg/kg) BBP: 0.1%(1000mg/kg) DEHP: 0.1%(1000mg/kg)	--

Shenzhen Most Technology Service Co., Limited

No.5, Nangshan 2th Rd., North Hi-Tech Industrial park, Nanshan Shenzhen Guangdong, China

Tel:(86) 755-86026850

Http:// www.szmost.com

Report No.: MTHN19110180

Fax:(86) 755-26013350

Email: szmost@szmost.com

			DIBP: ND	DIBP: 0.1%(1000mg/kg)	
22	SE-CAPC-0402-J-221	C2, C3, C5	Cd: N.D. Pb: N.D. Hg: N.D. Cr ⁶⁺ : N.D. PBBs: N.D. PBDEs: N.D. DBP: ND BBP: ND DEHP:ND DIBP: ND	Cd: 0.01%(100mg/kg) Pb: 0.1%(1000mg/kg) Hg: 0.1%(1000mg/kg) Cr ⁶⁺ : 0.1%(1000mg/kg) PBBs: 0.1%(1000mg/kg) PBDEs: 0.1%(1000mg/kg) DBP: 0.1%(1000mg/kg) BBP: 0.1%(1000mg/kg) DEHP: 0.1%(1000mg/kg) DIBP: 0.1%(1000mg/kg)	--
23	SE-CAPC-0805-Z-106A	C6, C9	Cd: N.D. Pb: N.D. Hg: N.D. Cr ⁶⁺ : N.D. PBBs: N.D. PBDEs: N.D. DBP: ND BBP: ND DEHP:ND DIBP: ND	Cd: 0.01%(100mg/kg) Pb: 0.1%(1000mg/kg) Hg: 0.1%(1000mg/kg) Cr ⁶⁺ : 0.1%(1000mg/kg) PBBs: 0.1%(1000mg/kg) PBDEs: 0.1%(1000mg/kg) DBP: 0.1%(1000mg/kg) BBP: 0.1%(1000mg/kg) DEHP: 0.1%(1000mg/kg) DIBP: 0.1%(1000mg/kg)	--
24	SE-CAPC-0402-J-220	C7	Cd: N.D. Pb: N.D. Hg: N.D. Cr ⁶⁺ : N.D. PBBs: N.D. PBDEs: N.D. DBP: ND BBP: ND DEHP:ND DIBP: ND	Cd: 0.01%(100mg/kg) Pb: 0.1%(1000mg/kg) Hg: 0.1%(1000mg/kg) Cr ⁶⁺ : 0.1%(1000mg/kg) PBBs: 0.1%(1000mg/kg) PBDEs: 0.1%(1000mg/kg) DBP: 0.1%(1000mg/kg) BBP: 0.1%(1000mg/kg) DEHP: 0.1%(1000mg/kg) DIBP: 0.1%(1000mg/kg)	--
25	SE-CAPC-0603-M-106	C10	Cd: N.D. Pb: N.D. Hg: N.D. Cr ⁶⁺ : N.D. PBBs: N.D. PBDEs: N.D. DBP: ND BBP: ND DEHP:ND DIBP: ND	Cd: 0.01%(100mg/kg) Pb: 0.1%(1000mg/kg) Hg: 0.1%(1000mg/kg) Cr ⁶⁺ : 0.1%(1000mg/kg) PBBs: 0.1%(1000mg/kg) PBDEs: 0.1%(1000mg/kg) DBP: 0.1%(1000mg/kg) BBP: 0.1%(1000mg/kg) DEHP: 0.1%(1000mg/kg) DIBP: 0.1%(1000mg/kg)	--

Shenzhen Most Technology Service Co., Limited

No.5, Nangshan 2th Rd., North Hi-Tech Industrial park, Nanshan Shenzhen Guangdong, China

Tel:(86) 755-86026850

Http:// www.szmost.com

Report No.: MTHN19110180

Fax:(86) 755-26013350

Email: szmost@szmost.com

26	SE-CAPC-0402-J-102	C11	Cd: N.D. Pb: N.D. Hg: N.D. Cr ⁶⁺ : N.D. PBBs: N.D. PBDEs: N.D. DBP: ND BBP: ND DEHP:ND DIBP: ND	Cd: 0.01%(100mg/kg) Pb: 0.1%(1000mg/kg) Hg: 0.1%(1000mg/kg) Cr ⁶⁺ : 0.1%(1000mg/kg) PBBs: 0.1%(1000mg/kg) PBDEs: 0.1%(1000mg/kg) DBP: 0.1%(1000mg/kg) BBP: 0.1%(1000mg/kg) DEHP: 0.1%(1000mg/kg) DIBP: 0.1%(1000mg/kg)	--
27	SE-RES5-0402-1000	R1	Cd: N.D. Pb: N.D. Hg: N.D. Cr ⁶⁺ : N.D. PBBs: N.D. PBDEs: N.D. DBP: ND BBP: ND DEHP:ND DIBP: ND	Cd: 0.01%(100mg/kg) Pb: 0.1%(1000mg/kg) Hg: 0.1%(1000mg/kg) Cr ⁶⁺ : 0.1%(1000mg/kg) PBBs: 0.1%(1000mg/kg) PBDEs: 0.1%(1000mg/kg) DBP: 0.1%(1000mg/kg) BBP: 0.1%(1000mg/kg) DEHP: 0.1%(1000mg/kg) DIBP: 0.1%(1000mg/kg)	--
28	SE-RES1-0402-5630	R2	Cd: N.D. Pb: N.D. Hg: N.D. Cr ⁶⁺ : N.D. PBBs: N.D. PBDEs: N.D. DBP: ND BBP: ND DEHP:ND DIBP: ND	Cd: 0.01%(100mg/kg) Pb: 0.1%(1000mg/kg) Hg: 0.1%(1000mg/kg) Cr ⁶⁺ : 0.1%(1000mg/kg) PBBs: 0.1%(1000mg/kg) PBDEs: 0.1%(1000mg/kg) DBP: 0.1%(1000mg/kg) BBP: 0.1%(1000mg/kg) DEHP: 0.1%(1000mg/kg) DIBP: 0.1%(1000mg/kg)	--
29	SE-RES1-0402-3630	R3	Cd: N.D. Pb: N.D. Hg: N.D. Cr ⁶⁺ : N.D. PBBs: N.D. PBDEs: N.D. DBP: ND BBP: ND DEHP:ND DIBP: ND	Cd: 0.01%(100mg/kg) Pb: 0.1%(1000mg/kg) Hg: 0.1%(1000mg/kg) Cr ⁶⁺ : 0.1%(1000mg/kg) PBBs: 0.1%(1000mg/kg) PBDEs: 0.1%(1000mg/kg) DBP: 0.1%(1000mg/kg) BBP: 0.1%(1000mg/kg) DEHP: 0.1%(1000mg/kg) DIBP: 0.1%(1000mg/kg)	--
30	SE-RES1-0402-1030	R4, R5, R10,	Cd: N.D. Pb: N.D. Hg: N.D.	Cd: 0.01%(100mg/kg) Pb: 0.1%(1000mg/kg) Hg: 0.1%(1000mg/kg)	--

Shenzhen Most Technology Service Co., Limited

No.5, Nangshan 2th Rd., North Hi-Tech Industrial park, Nanshan Shenzhen Guangdong, China

Tel:(86) 755-86026850

Http:// www.szmost.com

Report No.: MTHN19110180

Fax:(86) 755-26013350

Email: szmost@szmost.com

		R12, R14	Cr ⁶⁺ : N.D. PBBs: N.D. PBDEs: N.D. DBP: ND BBP: ND DEHP:ND DIBP: ND	Cr ⁶⁺ : 0.1%(1000mg/kg) PBBs: 0.1%(1000mg/kg) PBDEs: 0.1%(1000mg/kg) DBP: 0.1%(1000mg/kg) BBP: 0.1%(1000mg/kg) DEHP: 0.1%(1000mg/kg) DIBP: 0.1%(1000mg/kg)	
31	SE-RES5-0402-1010	R6, R7	Cd: N.D. Pb: N.D. Hg: N.D. Cr ⁶⁺ : N.D. PBBs: N.D. PBDEs: N.D. DBP: ND BBP: ND DEHP:ND DIBP: ND	Cd: 0.01%(100mg/kg) Pb: 0.1%(1000mg/kg) Hg: 0.1%(1000mg/kg) Cr ⁶⁺ : 0.1%(1000mg/kg) PBBs: 0.1%(1000mg/kg) PBDEs: 0.1%(1000mg/kg) DBP: 0.1%(1000mg/kg) BBP: 0.1%(1000mg/kg) DEHP: 0.1%(1000mg/kg) DIBP: 0.1%(1000mg/kg)	--
32	SE-RES5-0402-0000	R9	Cd: N.D. Pb: N.D. Hg: N.D. Cr ⁶⁺ : N.D. PBBs: N.D. PBDEs: N.D. DBP: ND BBP: ND DEHP:ND DIBP: ND	Cd: 0.01%(100mg/kg) Pb: 0.1%(1000mg/kg) Hg: 0.1%(1000mg/kg) Cr ⁶⁺ : 0.1%(1000mg/kg) PBBs: 0.1%(1000mg/kg) PBDEs: 0.1%(1000mg/kg) DBP: 0.1%(1000mg/kg) BBP: 0.1%(1000mg/kg) DEHP: 0.1%(1000mg/kg) DIBP: 0.1%(1000mg/kg)	--
33	SE-RES5-0402-1230	R8	Cd: N.D. Pb: N.D. Hg: N.D. Cr ⁶⁺ : N.D. PBBs: N.D. PBDEs: N.D. DBP: ND BBP: ND DEHP:ND DIBP: ND	Cd: 0.01%(100mg/kg) Pb: 0.1%(1000mg/kg) Hg: 0.1%(1000mg/kg) Cr ⁶⁺ : 0.1%(1000mg/kg) PBBs: 0.1%(1000mg/kg) PBDEs: 0.1%(1000mg/kg) DBP: 0.1%(1000mg/kg) BBP: 0.1%(1000mg/kg) DEHP: 0.1%(1000mg/kg) DIBP: 0.1%(1000mg/kg)	--
34	SE-RES5-0402-5120	R11	Cd: N.D. Pb: N.D. Hg: N.D. Cr ⁶⁺ : N.D. PBBs: N.D. PBDEs: N.D.	Cd: 0.01%(100mg/kg) Pb: 0.1%(1000mg/kg) Hg: 0.1%(1000mg/kg) Cr ⁶⁺ : 0.1%(1000mg/kg) PBBs: 0.1%(1000mg/kg) PBDEs: 0.1%(1000mg/kg)	--

Shenzhen Most Technology Service Co., Limited

No.5, Nangshan 2th Rd., North Hi-Tech Industrial park, Nanshan Shenzhen Guangdong, China

Tel:(86) 755-86026850

Http:// www.szmost.com

Report No.: MTHN19110180

Fax:(86) 755-26013350

Email: szmost@szmost.com

			DBP: ND BBP: ND DEHP:ND DIBP: ND	DBP: 0.1%(1000mg/kg) BBP: 0.1%(1000mg/kg) DEHP: 0.1%(1000mg/kg) DIBP: 0.1%(1000mg/kg)	
35	SE-RES5-0402-1430	R13	Cd: N.D. Pb: N.D. Hg: N.D. Cr ⁶⁺ : N.D. PBBs: N.D. PBDEs: N.D. DBP: ND BBP: ND DEHP:ND DIBP: ND	Cd: 0.01%(100mg/kg) Pb: 0.1%(1000mg/kg) Hg: 0.1%(1000mg/kg) Cr ⁶⁺ : 0.1%(1000mg/kg) PBBs: 0.1%(1000mg/kg) PBDEs: 0.1%(1000mg/kg) DBP: 0.1%(1000mg/kg) BBP: 0.1%(1000mg/kg) DEHP: 0.1%(1000mg/kg) DIBP: 0.1%(1000mg/kg)	--
36	SE-RES5-0402-1020	R15	Cd: N.D. Pb: N.D. Hg: N.D. Cr ⁶⁺ : N.D. PBBs: N.D. PBDEs: N.D. DBP: ND BBP: ND DEHP:ND DIBP: ND	Cd: 0.01%(100mg/kg) Pb: 0.1%(1000mg/kg) Hg: 0.1%(1000mg/kg) Cr ⁶⁺ : 0.1%(1000mg/kg) PBBs: 0.1%(1000mg/kg) PBDEs: 0.1%(1000mg/kg) DBP: 0.1%(1000mg/kg) BBP: 0.1%(1000mg/kg) DEHP: 0.1%(1000mg/kg) DIBP: 0.1%(1000mg/kg)	--
37	SE-MFPS23-AOM-3401	Q1, Q2, Q3, Q4	Cd: N.D. Pb: N.D. Hg: N.D. Cr ⁶⁺ : N.D. PBBs: N.D. PBDEs: N.D. DBP: ND BBP: ND DEHP:ND DIBP: ND	Cd: 0.01%(100mg/kg) Pb: 0.1%(1000mg/kg) Hg: 0.1%(1000mg/kg) Cr ⁶⁺ : 0.1%(1000mg/kg) PBBs: 0.1%(1000mg/kg) PBDEs: 0.1%(1000mg/kg) DBP: 0.1%(1000mg/kg) BBP: 0.1%(1000mg/kg) DEHP: 0.1%(1000mg/kg) DIBP: 0.1%(1000mg/kg)	--
38	SE-MFNS23-2N7002-1	Q5	Cd: N.D. Pb: N.D. Hg: N.D. Cr ⁶⁺ : N.D. PBBs: N.D. PBDEs: N.D. DBP: ND BBP: ND DEHP:ND	Cd: 0.01%(100mg/kg) Pb: 0.1%(1000mg/kg) Hg: 0.1%(1000mg/kg) Cr ⁶⁺ : 0.1%(1000mg/kg) PBBs: 0.1%(1000mg/kg) PBDEs: 0.1%(1000mg/kg) DBP: 0.1%(1000mg/kg) BBP: 0.1%(1000mg/kg) DEHP: 0.1%(1000mg/kg)	--

Shenzhen Most Technology Service Co., Limited

No.5, Nangshan 2th Rd., North Hi-Tech Industrial park, Nanshan Shenzhen Guangdong, China

Tel:(86) 755-86026850

Http:// www.szmost.com

Report No.: MTHN19110180

Fax:(86) 755-26013350

Email: szmost@szmost.com

			DIBP: ND	DIBP: 0.1%(1000mg/kg)	
39	SE-TSRS23-NPN-3904	Q6	Cd: N.D. Pb: N.D. Hg: N.D. Cr ⁶⁺ : N.D. PBBs: N.D. PBDEs: N.D. DBP: ND BBP: ND DEHP:ND DIBP: ND	Cd: 0.01%(100mg/kg) Pb: 0.1%(1000mg/kg) Hg: 0.1%(1000mg/kg) Cr ⁶⁺ : 0.1%(1000mg/kg) PBBs: 0.1%(1000mg/kg) PBDEs: 0.1%(1000mg/kg) DBP: 0.1%(1000mg/kg) BBP: 0.1%(1000mg/kg) DEHP: 0.1%(1000mg/kg) DIBP: 0.1%(1000mg/kg)	--
40	SE-LEDS-0402-ORG-1	D1, D2, D3	Cd: N.D. Pb: N.D. Hg: N.D. Cr ⁶⁺ : N.D. PBBs: N.D. PBDEs: N.D. DBP: ND BBP: ND DEHP:ND DIBP: ND	Cd: 0.01%(100mg/kg) Pb: 0.1%(1000mg/kg) Hg: 0.1%(1000mg/kg) Cr ⁶⁺ : 0.1%(1000mg/kg) PBBs: 0.1%(1000mg/kg) PBDEs: 0.1%(1000mg/kg) DBP: 0.1%(1000mg/kg) BBP: 0.1%(1000mg/kg) DEHP: 0.1%(1000mg/kg) DIBP: 0.1%(1000mg/kg)	--
41	SE-LEDS-603D-RBL-1	D7	Cd: N.D. Pb: N.D. Hg: N.D. Cr ⁶⁺ : N.D. PBBs: N.D. PBDEs: N.D. DBP: ND BBP: ND DEHP:ND DIBP: ND	Cd: 0.01%(100mg/kg) Pb: 0.1%(1000mg/kg) Hg: 0.1%(1000mg/kg) Cr ⁶⁺ : 0.1%(1000mg/kg) PBBs: 0.1%(1000mg/kg) PBDEs: 0.1%(1000mg/kg) DBP: 0.1%(1000mg/kg) BBP: 0.1%(1000mg/kg) DEHP: 0.1%(1000mg/kg) DIBP: 0.1%(1000mg/kg)	--
42	SE-INDW-L2016-4U7	L1	Cd: N.D. Pb: N.D. Hg: N.D. Cr ⁶⁺ : N.D. PBBs: N.D. PBDEs: N.D. DBP: ND BBP: ND DEHP:ND DIBP: ND	Cd: 0.01%(100mg/kg) Pb: 0.1%(1000mg/kg) Hg: 0.1%(1000mg/kg) Cr ⁶⁺ : 0.1%(1000mg/kg) PBBs: 0.1%(1000mg/kg) PBDEs: 0.1%(1000mg/kg) DBP: 0.1%(1000mg/kg) BBP: 0.1%(1000mg/kg) DEHP: 0.1%(1000mg/kg) DIBP: 0.1%(1000mg/kg)	--

Shenzhen Most Technology Service Co., Limited

No.5, Nangshan 2th Rd., North Hi-Tech Industrial park, Nanshan Shenzhen Guangdong, China

Tel:(86) 755-86026850

Http:// www.szmost.com

Report No.: MTHN19110180

Fax:(86) 755-26013350

Email: szmost@szmost.com

43	SE-INDW-L2016-4U7	L1	Cd: N.D. Pb: N.D. Hg: N.D. Cr ⁶⁺ : N.D. PBBs: N.D. PBDEs: N.D. DBP: ND BBP: ND DEHP:ND DIBP: ND	Cd: 0.01%(100mg/kg) Pb: 0.1%(1000mg/kg) Hg: 0.1%(1000mg/kg) Cr ⁶⁺ : 0.1%(1000mg/kg) PBBs: 0.1%(1000mg/kg) PBDEs: 0.1%(1000mg/kg) DBP: 0.1%(1000mg/kg) BBP: 0.1%(1000mg/kg) DEHP: 0.1%(1000mg/kg) DIBP: 0.1%(1000mg/kg)	--
44	SE-CHIP-BES-3100S	U2	Cd: N.D. Pb: N.D. Hg: N.D. Cr ⁶⁺ : N.D. PBBs: N.D. PBDEs: N.D. DBP: ND BBP: ND DEHP:ND DIBP: ND	Cd: 0.01%(100mg/kg) Pb: 0.1%(1000mg/kg) Hg: 0.1%(1000mg/kg) Cr ⁶⁺ : 0.1%(1000mg/kg) PBBs: 0.1%(1000mg/kg) PBDEs: 0.1%(1000mg/kg) DBP: 0.1%(1000mg/kg) BBP: 0.1%(1000mg/kg) DEHP: 0.1%(1000mg/kg) DIBP: 0.1%(1000mg/kg)	--
45	SE-CHP-MAX-MAX97220A	U4	Cd: N.D. Pb: N.D. Hg: N.D. Cr ⁶⁺ : N.D. PBBs: N.D. PBDEs: N.D. DBP: ND BBP: ND DEHP:ND DIBP: ND	Cd: 0.01%(100mg/kg) Pb: 0.1%(1000mg/kg) Hg: 0.1%(1000mg/kg) Cr ⁶⁺ : 0.1%(1000mg/kg) PBBs: 0.1%(1000mg/kg) PBDEs: 0.1%(1000mg/kg) DBP: 0.1%(1000mg/kg) BBP: 0.1%(1000mg/kg) DEHP: 0.1%(1000mg/kg) DIBP: 0.1%(1000mg/kg)	--
46	SE-ICSY-SY8201-01	U1	Cd: N.D. Pb: N.D. Hg: N.D. Cr ⁶⁺ : N.D. PBBs: N.D. PBDEs: N.D. DBP: ND BBP: ND DEHP:ND DIBP: ND	Cd: 0.01%(100mg/kg) Pb: 0.1%(1000mg/kg) Hg: 0.1%(1000mg/kg) Cr ⁶⁺ : 0.1%(1000mg/kg) PBBs: 0.1%(1000mg/kg) PBDEs: 0.1%(1000mg/kg) DBP: 0.1%(1000mg/kg) BBP: 0.1%(1000mg/kg) DEHP: 0.1%(1000mg/kg) DIBP: 0.1%(1000mg/kg)	--
47	SE-CHIP-LDR-6023SS	U2	Cd: N.D. Pb: N.D. Hg: N.D.	Cd: 0.01%(100mg/kg) Pb: 0.1%(1000mg/kg) Hg: 0.1%(1000mg/kg)	--

Shenzhen Most Technology Service Co., Limited

No.5, Nangshan 2th Rd., North Hi-Tech Industrial park, Nanshan Shenzhen Guangdong, China

Tel:(86) 755-86026850

Http:// www.szmost.com

Report No.: MTHN19110180

Fax:(86) 755-26013350

Email: szmost@szmost.com

			Cr ⁶⁺ : N.D. PBBs: N.D. PBDEs: N.D. DBP: ND BBP: ND DEHP:ND DIBP: ND	Cr ⁶⁺ : 0.1%(1000mg/kg) PBBs: 0.1%(1000mg/kg) PBDEs: 0.1%(1000mg/kg) DBP: 0.1%(1000mg/kg) BBP: 0.1%(1000mg/kg) DEHP: 0.1%(1000mg/kg) DIBP: 0.1%(1000mg/kg)	
48	SE-XTAL-0302-26M-1	Y1	Cd: N.D. Pb: N.D. Hg: N.D. Cr ⁶⁺ : N.D. PBBs: N.D. PBDEs: N.D. DBP: ND BBP: ND DEHP:ND DIBP: ND	Cd: 0.01%(100mg/kg) Pb: 0.1%(1000mg/kg) Hg: 0.1%(1000mg/kg) Cr ⁶⁺ : 0.1%(1000mg/kg) PBBs: 0.1%(1000mg/kg) PBDEs: 0.1%(1000mg/kg) DBP: 0.1%(1000mg/kg) BBP: 0.1%(1000mg/kg) DEHP: 0.1%(1000mg/kg) DIBP: 0.1%(1000mg/kg)	--
49	SE-PCB4-UDAC-AS2-BK	PCB	Cd: N.D. Pb: N.D. Hg: N.D. Cr ⁶⁺ : N.D. PBBs: N.D. PBDEs: N.D. DBP: ND BBP: ND DEHP:ND DIBP: ND	Cd: 0.01%(100mg/kg) Pb: 0.1%(1000mg/kg) Hg: 0.1%(1000mg/kg) Cr ⁶⁺ : 0.1%(1000mg/kg) PBBs: 0.1%(1000mg/kg) PBDEs: 0.1%(1000mg/kg) DBP: 0.1%(1000mg/kg) BBP: 0.1%(1000mg/kg) DEHP: 0.1%(1000mg/kg) DIBP: 0.1%(1000mg/kg)	--
50	SE-PCB4-TCPDA-B2-BK	PCB	Cd: N.D. Pb: N.D. Hg: N.D. Cr ⁶⁺ : N.D. PBBs: N.D. PBDEs: N.D. DBP: ND BBP: ND DEHP:ND DIBP: ND	Cd: 0.01%(100mg/kg) Pb: 0.1%(1000mg/kg) Hg: 0.1%(1000mg/kg) Cr ⁶⁺ : 0.1%(1000mg/kg) PBBs: 0.1%(1000mg/kg) PBDEs: 0.1%(1000mg/kg) DBP: 0.1%(1000mg/kg) BBP: 0.1%(1000mg/kg) DEHP: 0.1%(1000mg/kg) DIBP: 0.1%(1000mg/kg)	--
51	HG-CASE-AUHA06BBK-T1	Plastic cover	Cd: N.D. Pb: N.D. Hg: N.D. Cr ⁶⁺ : N.D. PBBs: N.D. PBDEs: N.D.	Cd: 0.01%(100mg/kg) Pb: 0.1%(1000mg/kg) Hg: 0.1%(1000mg/kg) Cr ⁶⁺ : 0.1%(1000mg/kg) PBBs: 0.1%(1000mg/kg) PBDEs: 0.1%(1000mg/kg)	--

Shenzhen Most Technology Service Co., Limited

No.5, Nangshan 2th Rd., North Hi-Tech Industrial park, Nanshan Shenzhen Guangdong, China

Tel:(86) 755-86026850

Http:// www.szmost.com

Report No.: MTHN19110180

Fax:(86) 755-26013350

Email: szmost@szmost.com

			DBP: ND BBP: ND DEHP:ND DIBP: ND	DBP: 0.1%(1000mg/kg) BBP: 0.1%(1000mg/kg) DEHP: 0.1%(1000mg/kg) DIBP: 0.1%(1000mg/kg)	
52	HG-CASE-AUHA06BBK-B1	Bottom cover	Cd: N.D. Pb: N.D. Hg: N.D. Cr ⁶⁺ : N.D. PBBs: N.D. PBDEs: N.D. DBP: ND BBP: ND DEHP:ND DIBP: ND	Cd: 0.01%(100mg/kg) Pb: 0.1%(1000mg/kg) Hg: 0.1%(1000mg/kg) Cr ⁶⁺ : 0.1%(1000mg/kg) PBBs: 0.1%(1000mg/kg) PBDEs: 0.1%(1000mg/kg) DBP: 0.1%(1000mg/kg) BBP: 0.1%(1000mg/kg) DEHP: 0.1%(1000mg/kg) DIBP: 0.1%(1000mg/kg)	--

Note:

-N.D. = not detected (<5ppm)

Shenzhen Most Technology Service Co., Limited

No.5, Nangshan 2th Rd., North Hi-Tech Industrial park, Nanshan Shenzhen Guangdong, China

Tel:(86) 755-86026850

Http:// www.szmost.com

Report No.: MTHN19110180

Fax:(86) 755-26013350

Email: szmost@szmost.com

-N.A. = not applicable

- “▼”= The sample is negative for Cr(VI) – The Cr(VI) concentration is below 0.10 µg/cm². The coating is considered a non-Cr(VI) based coating.

“#” = copper alloy. The lead content which is under 4% (40000ppm) is exempted from the requirement of RoHS Directive 2011/65/EU (RoHS)

“PBBs”=Contains: Monobromobiphenyl; Dibromobiphenyl; Tribromobiphenyl; Tetrabromobiphenyl; Pentabromobiphenyl; Hexabromobiphenyl; Heptabromobiphenyl; Octabromobiphenyl; Nonabromobiphenyl; Decabromobiphenyl.

“PBDEs”= Contains: Monobromodiphenyl ether; Dibromodiphenyl ether; Tribromodiphenyl ether; Tetrabromodiphenyl ether; Pentabromodiphenyl ether; Hexabromodiphenyl ether; Heptabromodiphenyl ether; Octabromodiphenyl ether; Nonabromodiphenyl ether; Decabromodiphenyl ether..;

Not directed is reported when the reading is less than detection limit value.

- 1) This report is not a formal test report but only consolidating the test data listed above;
- 2) The above test report of raw material which is not issued by MOST is offered by the applicant as a reference of consolidated data;
- 3) MOST has not conducted any verification on the test data in the above test report that is not issued by MOST.
- 4) This report can not be issued repeatedly unless there is a written approval by the lab.

Shenzhen Most Technology Service Co., Limited

No.5, Nangshan 2th Rd., North Hi-Tech Industrial park, Nanshan Shenzhen Guangdong, China

Tel:(86) 755-86026850

Http:// www.szmost.com

Report No.: MTHN19110180

Fax:(86) 755-26013350

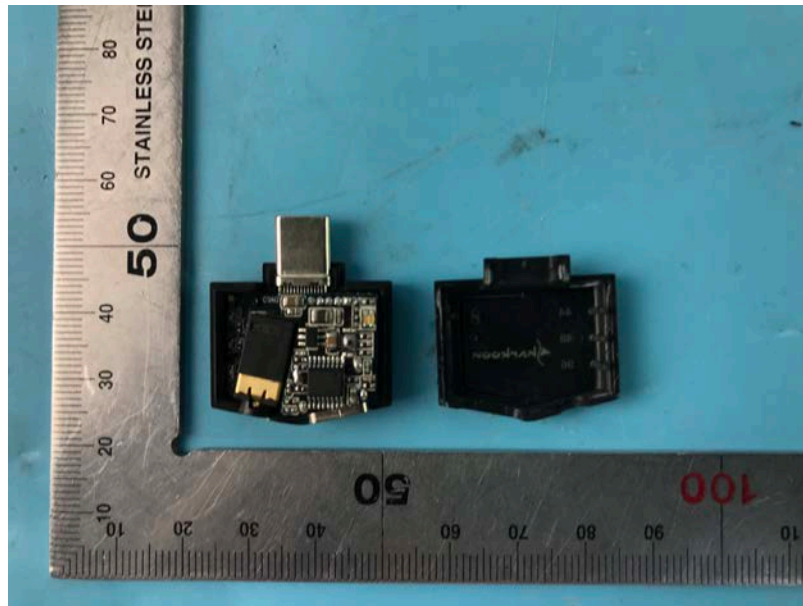
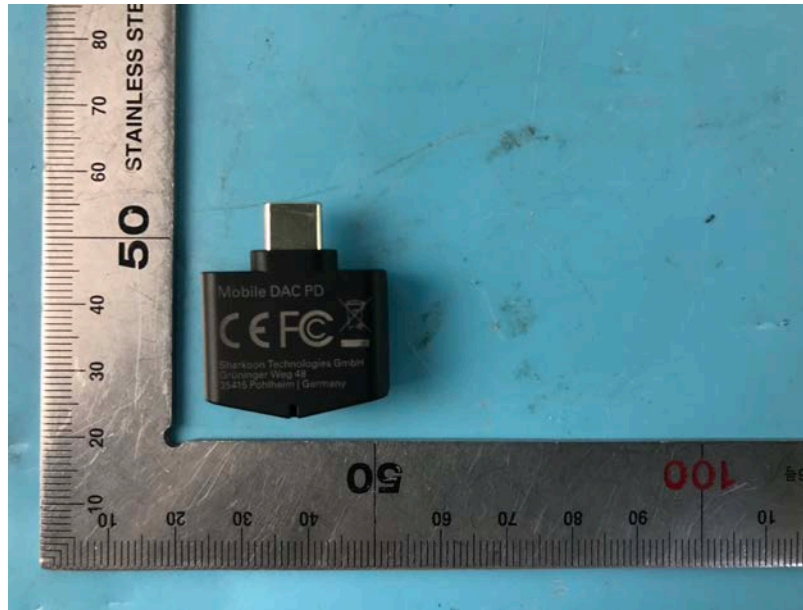
Email: szmost@szmost.com

APPENDIX I

(Photos of the Sample)

Appendix 1

Hi-Res Type C Audio Adapter with PD



----- End of report -----